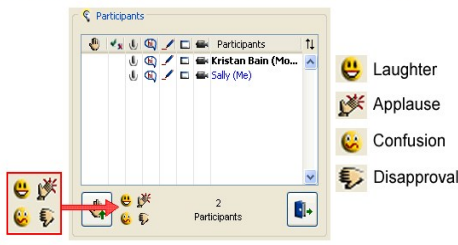


Using Emotion Indicators

At any time, you can click on any one of the emotion indicators to provide feedback to the moderator.



Participants

- Laughter
- Applause
- Confusion
- Disapproval

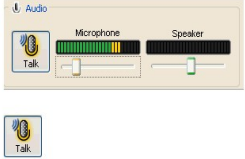
2 Participants

©2001-2007 Eliminate, Inc. All Rights Reserved.

Using Audio: Talking

Click the Talk button or use the hot key of Ctrl+F2 when you want to speak.

The Talk button turns yellow while your audio is activated.

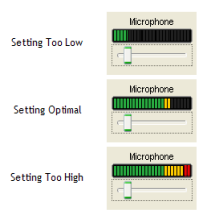


When you are done talking, click the Talk button or Ctrl+F2 to release your microphone. Remember to always release your microphone after talking so others can reply. By default, only one person can speak at a time. The moderator can increase it up to six simultaneous speakers.

©2001-2007 Eliminate, Inc. All Rights Reserved.

Using Audio: Talking

Use the Microphone and the Speaker sliders to adjust the volume for your microphone and speakers. The gauges below the sliders show the audio levels when you or someone else is speaking. Use the following guidelines to set your Mic slider when you are speaking:




Setting Too Low

Setting Optimal

Setting Too High

©2001-2007 Eliminate, Inc. All Rights Reserved.

Using Audio: When Someone Else is Talking



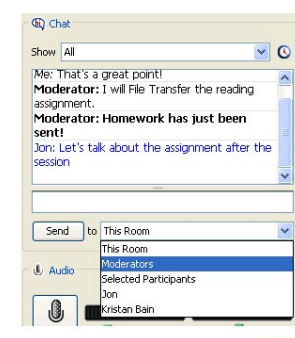
The microphone icon in the Participants window glows...

The speaker's name appears on the title bar of the Audio window.

Close This Window

©2001-2007 Eliminate, Inc. All Rights Reserved.

Using Chat

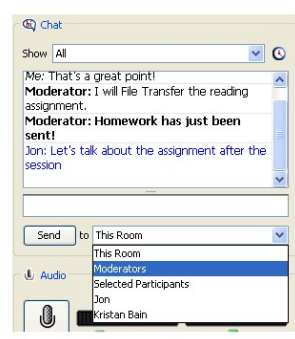


Type your message in the text box and then select Send.

Close This Window

©2001-2007 Eliminate, Inc. All Rights Reserved.

Using Chat



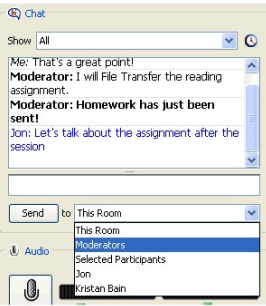
Your message is added to the discussion area.

You can always send a chat message to the moderator, even when you do not have any chat privileges.

Close This Window

©2001-2007 Eliminate, Inc. All Rights Reserved.

Directing Your Chat



Me: That's a great point!
Moderator: I will File Transfer the reading assignment.
Moderator: Homework has just been sent!
Jon: Let's talk about the assignment after the session

Send to: This Room
This Room
Moderators
Selected Participants
Jon
Kristan Bain


Close This Window

©2001-2007 Eluminate, Inc. All Rights Reserved.

You can send your message to everyone in the session, just the moderator, another participant or several participants.

Depending on the session configuration, your moderator may see all the messages sent in the Chat area, including private messages that you send to other participants.

Printing the Whiteboard



File Session View Tools Window Help
New
Open
Save
Page Setup...
Print... Print... Ctrl+P
Exit Whiteboard...


Close This Window

©2001-2007 Eluminate, Inc. All Rights Reserved.

You can print the whiteboard screens directly from Eluminate Live!

The Print menu option will be grayed out if the moderator has protected the whiteboard content.

Saving the Whiteboard



File Session View Tools Window Help
New
Open
Save... Save... Ctrl+S
Page Setup...
Print...
Exit Chat Conversation... Whiteboard...
Jon
Sally (Me)

Close This Window

©2001-2007 Eluminate, Inc. All Rights Reserved.

You can save your whiteboard screens to a file that you can review later. The screens can be saved in three formats: as a whiteboard (.wbd) file or as a whiteboard PDF (.pdf) file or individually as image files (.png)

The chat messages during the session can also be saved as a text (.txt) file.

The Whiteboard menu option will be grayed out if the moderator has protected the whiteboard content.

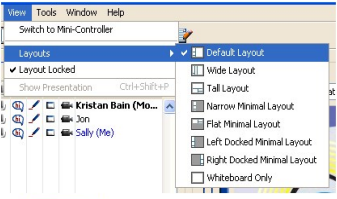
Resizing the Window Layout

If you moved, resized, or hid any of the classroom windows, select Default Window Layout or Wide Window Layout to proportionally resize the windows to fill the total Elluminate Live! region. If the Notes or the Calculator window was open, it is placed on top of the other windows.

Various window layouts are available to select from. Use the button on the toolbar to make your selection.

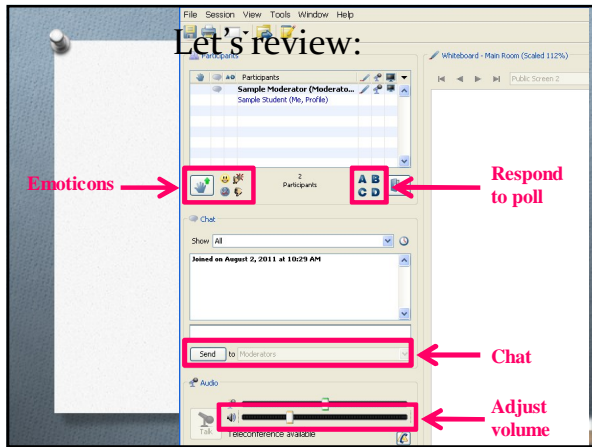
When you first join your session, your windows will be locked into one of the default layouts.

When you resize the Elluminate Live! application, all windows will be automatically resized proportionally to fit the screen. You can unlock the windows from the View menu.



©2001-2007 Elluminate, Inc. All Rights Reserved.

Let's review:



Emoticons →

Respond to poll →

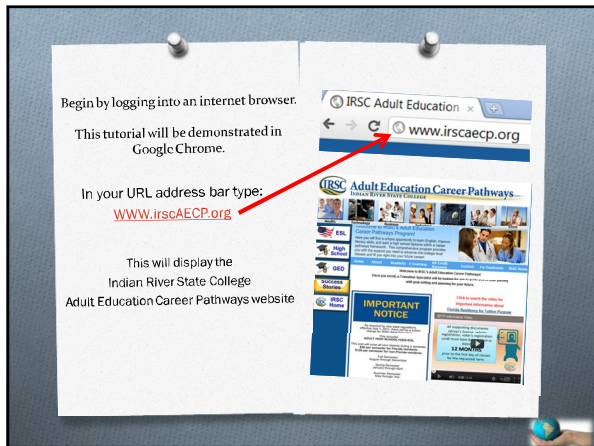
Chat →

Adjust volume →

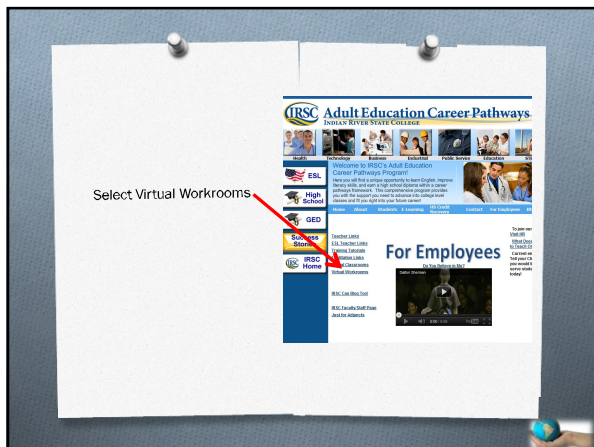
Today's lesson will cover:

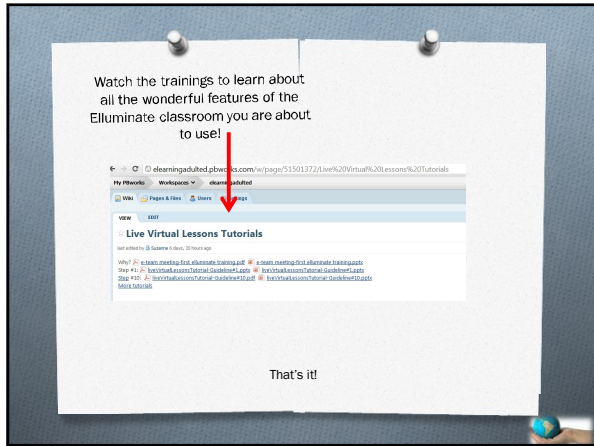
Guideline #2 in Creating Live Virtual Lessons

Review Elluminate Trainings!











This document was created with Win2PDF available at <http://www.win2pdf.com>.
The unregistered version of Win2PDF is for evaluation or non-commercial use only.
This page will not be added after purchasing Win2PDF.