

Data

SWOT

Recruitment

Retention

Completion

Transition

Plan



# IRSC AECp e-Learning

Click **Data** to get started!

Data

SWOT

Recruitment

Retention

Completion

Transition

Plan



# IRSC AECP e-Learning

[More About e-Learning](#)

## Annual Live Report

## Summer 2012-Spring 2013

Department

ABE

AHS

GED

ESL

Totals

Headcount

155

97

31

39

307

*Unduplicated Totals DSS>AE...Summary-5/8/13*

FTE

35

13

8

11

67

*DSS>FTE>FTE by Term Distance Learning-5/8/13*

Retention

84%

68%

79%

96%

87%

Completions

53

54

12

11

122

*Students earned an LCP*

Completions

34%

56%

39%

28%

40%

*Students earned an LCP/Total Enrollment*

Transitioned

22

45

10

5

81

*Prior year AE student transitions PLUS current year AE students co-enrolled*

Transitioned

14%

46%

31%

13%

26%

*As compared to Headcount this year*



# IRSC AECP e-Learning

FTE Report	2012 – 2013				
	ABE	AHS	GED	ESL	Totals
<b>e-Learning FTE</b>	35	13	8	11	67
<small>FTE *DSS&gt;FTE&gt;FTE by Term Distance Learning-5/8/13</small>					
<b>Compared to:</b>					
<b>Mueller</b>	9.6		2.1	31.6	43.3
<b>Chastain</b>	5.6	17.5	1.7	20.6	45.4
<b>Okeechobee</b>	5.7		2.8	2.3	10.8
<small>R&amp;R-2/25/13</small>					
<a href="#">Full report</a>					

[More About e-Learning](#)



# IRSC AECP e-Learning

## Marketing:

## Systematic Processes and Collaboration

[Website](#)  
[FB page](#)  
[Partners](#)

Intake: [Student Guide](#)

Synchronous and Asynchronous  
Delivery in Angel  
Cost effective, Comprehensive Courseware

[Recorded Live Virtual Lessons](#)

[Resources for Students:](#)  
[11 instructors \(10 adjunct\)](#)  
[31 courses offered](#)

Team collaboration

[Processes](#)  
[Trainings](#)  
[Professional Community](#)

Driving with data:

[Evaluations](#)  
[Surveys](#)  
Analytics:  
[Hits](#)  
[Attendance](#)



Data

SWOT

Recruitment

Retention

Completion

Transition

Plan



# IRSC AECP e-Learning

[DETAILS](#)

Annual Live Report	Summer 2012-Spring 2013				
Department	ABE	AHS	GED	ESL	Totals
Headcount Unduplicated Total <small>*5/8/13-DSS&gt;AE...Sum.</small>	155	97	31	39	307
Total LCPs earned to-date <small>(4/19/13-DSS)</small>	82	112	19	15	217
Students earned an LCP	53	54	12	11	122
Students earned an LCP/Tot. enroll.	34%	56%	39%	28%	40%
1. Co/Dual Enrolled* in Post-sec. (PS)	9	19	2	4	32
% Co/Dual.../Dept. Headcount	6%	20%	6%	10%	10%
Grad. Prior Year <small>(2011-2012; June-May 31) R&amp;R-2/25/13</small>	7	23	8	0	38
2a. Tran. from prior year into PS	4	13	4	0	21
2b. Tran. from prior year into PS, not grad., not enrolled in AE 2012-13	4	11	3	1	19
Total ("Co/Dual..." & "Tran.") in PS	20	43	9	5	75
<small>Last update: 5/7/2013</small> % Tran. (1, 2a&b)/2012-2013 Head...	13%	44%	29%	13%	24%



# IRSC AEC e-Learning

## POSITIVES

## NEGATIVES

INTERNAL  
FACTORS

Pending Survey

[Live Virtual Lessons](#) – [Stats!](#)

- [Saved by Subject, by Level](#)

Partner with College to use Course Evals.

Pending Survey

Timeliness of uploading recorded lessons

Most instructors don't use

Technical issues

STRENGTHS



WEAKNESSES



EXTERNAL  
FACTORS

Pending Survey

Pending Survey

OPPORTUNITIES



THREATS





# IRSC AECP e-Learning

## Market:

- Partnered with Enterprise Systems (Mariner Steering Committee) to produce a report pulling the data from the “How did you hear about us?” field on the applications to drive our marketing plan.
- Meeting with IA (Robert Lane) to discuss:
  - Social Media advertising, such as [Google AdWords](#) / [FB ads](#) - Can monitor analytics
  - SLW Voices ad
- Meeting with Debra Hargrove re: Tweeting to increase social media hits; along with YouTube videos, newsletter Blog
- Went through V-School training and meeting with V-Schools Kendall St. Hilaire to see how can partner to increase enrollment, retention, and completion.
- Website optimization-Research and plan as to *how*
- Presentations to:
  - Homeschool Associations-Suz
  - Homeless Centers-Suz
  - Bracken Library-Suz
  - Info Sessions (offered on Main by LeAnn)
  - Faculty and staff - By Students
  - Ideas from e-Team-Boat Company, etc.
- LOL (Learn OnLine/Surfin’ for the River?) [www.irsc.edu](http://www.irsc.edu) flash drive bracelets worn by students
- Get feedback from Recruitment tools (Lara gave me) and sites for next steps





# IRSC AECP e-Learning

## Increase Retention

How:

- Offer e-Learning assessment to assure computer competency
  - (located on flash drive bracelets to plug in to their own devices if bring them in or computer in our atrium or from our webpage)
- Upon successful completion of computer competency assessment, provide students with LOL flash drive inclusive of Shortcut to website and course login location, Transition App, and folder to backup all work to reduce frustration and technology issues
- Create Student Progress Report form for instructors to submit monthly (includes positive blurb for newsletter).
- Move from Elluminate to Collaborate ([Training link](#)) and/or VSchoolz
- Meet with Ms. Kendall St. Hilaire Director of Virtual Campus at IRSC to discuss partnering with them to take advantage of V-Schools.
- Visit sites, review intake and questions with them







# IRSC AECP e-Learning

## Increase Completion

- Focus getting ALL completion rates (total and individual) “passing”... ROI
- Partner with IRSC e-Learning department to train instructors on [Symbaloo](#) share supportive resources.

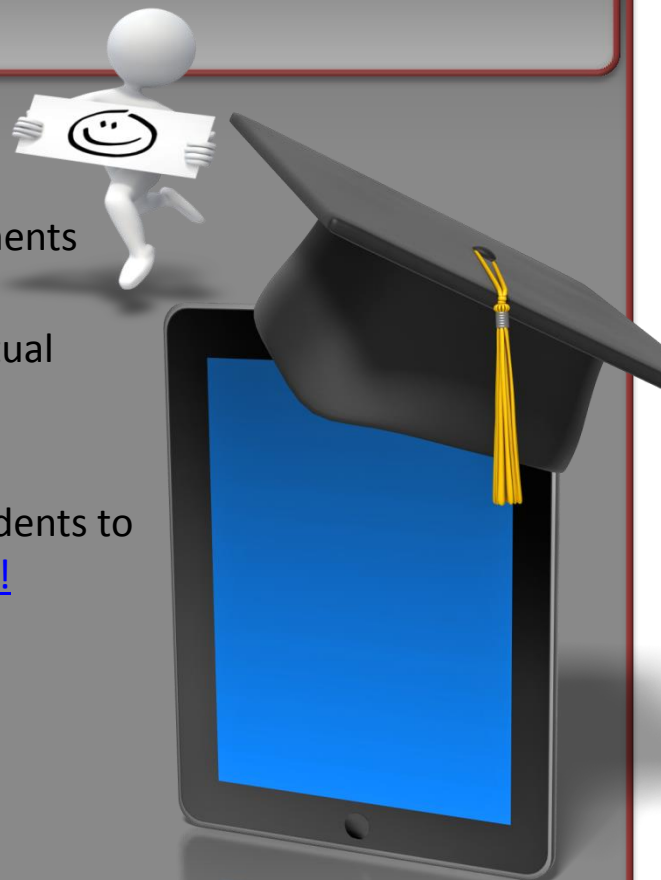




# IRSC AECP e-Learning

## Increase How:

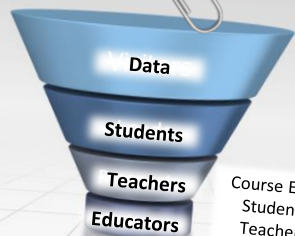
- Develop an IRSC AECP e-Learning App, including Transitioning elements located on flash drive bracelet
- Offer Transitioning Workshops (such as FASFA and Choices Live Virtual Lessons in Collaborate)
- Advertise these sessions in FB ([www.facebook.com/irscAECP](http://www.facebook.com/irscAECP))
- Sign up for GED Math Training at the end of the month to *move* students to post-secondary: May 29<sup>th</sup> – evening; May 30<sup>th</sup> – day. [Register Now!](#)



*Chairs, match SPOL*



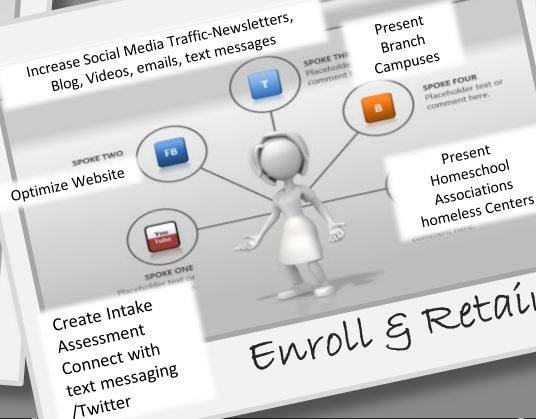
# IRSC AECP e-Learning



Course Evaluations.  
Student Surveys  
Teacher Surveys  
Educator feedback

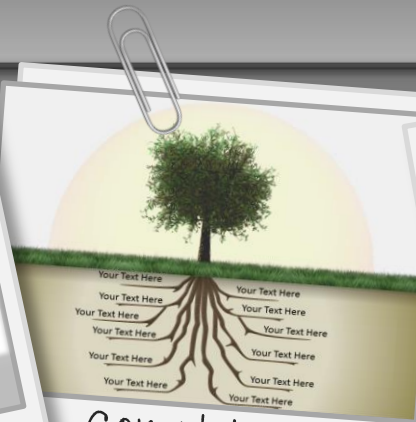
Analysis

Spring 2013



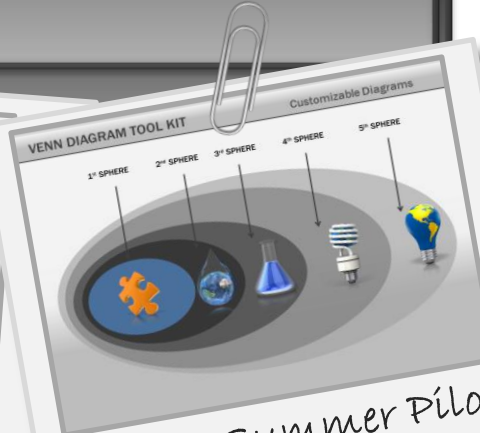
Enroll & Retain

May-June



Complete & Eval

July



Repeat Summer Pilot

Fall 2013

## Analysis

- ✓ Collected Student Surveys & data
- ✓ Updated data, Course Evaluations, and Teacher Survey results – May 6<sup>th</sup>
- Send Surveys out June 10<sup>th</sup>
- ✓ Gather Educator feedback from - May 20<sup>th</sup>

## Enroll & Retain

- Create Intake Assessment- June 10<sup>th</sup>– June 25<sup>th</sup>
- Recruit: June 10<sup>th</sup>- June 25<sup>th</sup>
- June 27<sup>th</sup>-Meet with IA-discuss value and need for [AdWords](#), web marketing to boost enrollment

## Complete & Evaluate

- Meet with Kendall
- Evaluate & adjust accordingly
- Optimize Website
- Increase Social Media Traffic
- Newsletters, Blog, Videos, text messages; Present -Campuses; Homeschools; homeless centers

## Repeat Summer Pilot

- Add Google [AdWords](#)?
- Enroll
- Retain
- Complete

Data

SWOT

Recruitment

Retention

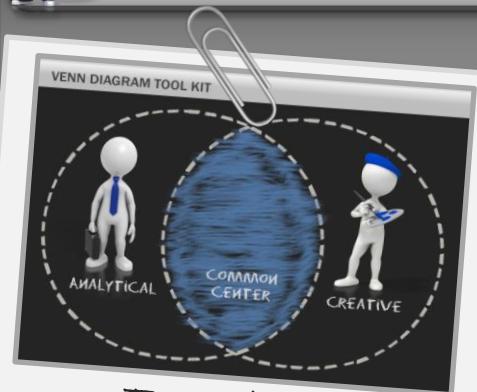
Completion

Transition

Plan



# IRSC AECP e-Learning



Transition



Evaluate & Add!



Evaluate & Add!



Evaluate & Add!

Fall 2013

Jan.-Feb.

March-April

Summer 2014

Transition

Evaluate & Add!

Evaluate & Add!

Evaluate & Add!

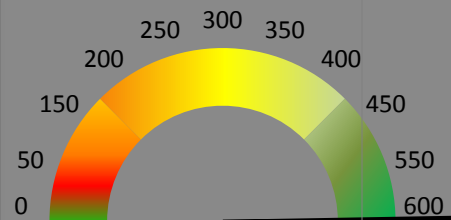
Next



# IRSC AECP e-Learning

## Specific Targets for 2013-2014:

### Enrolment

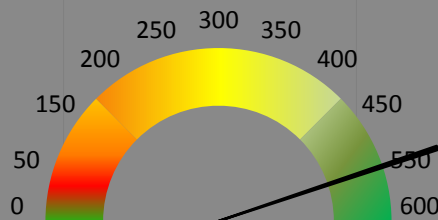


100  
Percent  
Success

**614**

**Headcount**  
(Doubled)

### Retention

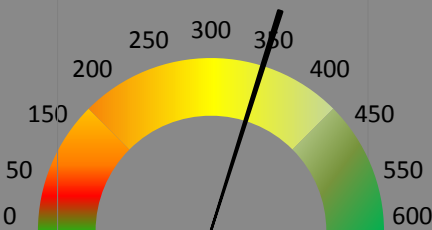


90  
Percent  
Success

**553**

**Retention**

### Completions

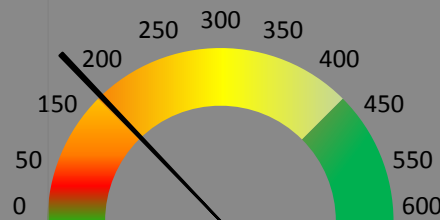


60  
Percent  
Success

**368**

**Completions**

### Transitions



26  
Percent  
Success

**160**

**Transitions**

Questions?



**IRSC AECPP e-Learning**



**For *EVENING INSTRUCTORS*:** Type *Ctrl + Click* to follow the Survey Monkey registration link.

GED Training Workshop - Math Reasoning - Ft. Pierce	
Date	Thursday May 30, 2013 9:00 AM - 4:00 PM
Contact	June Rall <a href="mailto:jrall@irsc.edu">jrall@irsc.edu</a>
Description	Indian River State College 3209 Virginia Ave. Kight Center, Room V-110 Fort Pierce, FL 34981  Register here: <a href="http://www.surveymonkey.com/s/GED5-30-13">http://www.surveymonkey.com/s/GED5-30-13</a>

**For *MORNING & AFTERNOON INSTRUCTORS*:** Type *Ctrl + Click* to follow the Survey Monkey link.

GED Training Workshop - Math Reasoning - Ft. Pierce	
Date	Wednesday May 29, 2013 5:30 PM - 9:00 PM
Contact	June Rall <a href="mailto:jrall@irsc.edu">jrall@irsc.edu</a>
Description	Indian River State College 3209 Virginia Ave. Kight Center, Room V-110 Fort Pierce, FL 34981  Register here: <a href="http://www.surveymonkey.com/s/GED5-29-13">http://www.surveymonkey.com/s/GED5-29-13</a>